

**BALDOR® • RELIANCE** 

**Product Information Packet**

**IDDRPM407004R1**

**700HP, 1780/2400RPM, 460V, 3PH, DPGFV, RL4058**

Part Detail							
Revision:	B	Status:	PRD/A	Change #:		Proprietary:	No
Type:	AC	Elec. Spec:	L6225A	CD Diagram:	422927-001	Mfg Plant:	
Mech. Spec:		Layout:	619660-001	Poles:	04	Created Date:	04-09-2015
Base:		Eff. Date:	10-24-2019	Leads:			

Specs			
Catalog Number:	IDDRPM407004R1		
Enclosure:	DPFV		
Frame:	RL4058		
Frame Material:	Exposed Laminations		
Output @ Frequency:	700.000 @ 60 HZ		
	700.000 HP @ 60 HZ		
Synchronous Speed @ Frequency:	1800 RPM @ 60 HZ		
Voltage @ Frequency:	460.0 V @ 60 HZ		
	460 V @ 60 HZ		
Agency Approvals:	CCSA US		
	UR		
Auxillary Box:	No Auxillary Box		
Base Indicator:	Rigid		
Bearing Grease Type:	Polyrex EM (-20F +300F)		
Current @ Voltage:	777.000 A @ 460.0 V		
Duty Rating:	CONT		
Enclosure Modification:	FORCE VENT		
Feedback Device:	NO FEEDBACK		

<b>Frame Prefix:</b>	RL		
<b>Heater Indicator:</b>	No Heater		
<b>Insulation Class:</b>	H		
<b>Mounting Arrangement:</b>	F1		
<b>Product Family:</b>	General Industrial		
<b>Pulley End Bearing Type:</b>	Ball		
<b>Pulley Face Code:</b>	C-Face		
<b>Shaft Ground Indicator:</b>	Shaft Grounding		
<b>Shaft Rotation:</b>	Reversible		
<b>Motor Standards:</b>	NEMA		
<b>Thermal Device - Bearing:</b>	None		
<b>Thermal Device - Winding:</b>	Normally Closed Thermostat		

Nameplate 000613006NN										
	<b>DUTY</b>	<b>HP</b>	<b>RPM</b>	<b>AMPS</b>	<b>VOLTS</b>	<b>HZ</b>				
	CONT	700	1780	777	460	60				
	CONT	700	2400	763	460	81				
<b>CAT.NO.</b>	IDDRPM407004R1		<b>SPEC. NO.</b>	P40R1327						
<b>SER.NO.</b>			<b>FR</b>	RL 4058	<b>INSUL</b>	H				
<b>PH.</b>	3		<b>MAX SAFE SPEED</b>	3750	<b>AMB.</b>	40			<b>MIN. AMB.</b>	-25
<b>DESIGN NO.</b>	L6225A		<b>TYPE</b>		<b>ENCL.</b>	DP				
<b>S.F.</b>	1.00		<b>D.E. BRG.</b>	95BC02J30X						
<b>ENCL MOD</b>	FORCE VENT		<b>O.D.E. BRG.</b>	6316/C3VL0241						

Parts List		
Part Number	Description	Quantity
WS286593	WS P40R1327	1.000 EA
RA282825	RA P40R1327	1.000 EA
000692000FP	NP, WARNING LIFT INSTRUCTIONS	1.000 EA
000692000VD	LABEL WARNING	1.000 EA
418057747A	METAL FASTENER	8.000 EA
000613006NN	RPM AC WITH CERTIFIED LOGOS	1.000 EA
422927001	C/D LABEL	1.000 EA
004824015A	GREASE POLYREX EM	0.900 LB
034690002AL	1/4 SQ.HD.PIPE PLUG	1.000 EA
034690002AL	1/4 SQ.HD.PIPE PLUG	1.000 EA
035000001A	ALFTG 1/8" 1610-BL	1.000 EA
035000001A	ALFTG 1/8" 1610-BL	1.000 EA
036100090KA	HSHCS SHAFT BLOCK	4.000 EA
036100090KA	HSHCS SHAFT BLOCK	4.000 EA
036140001F	M30-3.5 X 45MM EYEBOLT	2.000 EA
036500013AB	HX NUT,ODE BRKT	4.000 EA
423317001A	GRD BRUSH HOLDER	1.000 EA
036500013AB	HX NUT,ODE BRKT	4.000 EA
418150003A	GREASE FITTING CAP	2.000 EA
419912001B	W WASHER	1.000 EA
036000020GB	HHCS SH B/HLDR MT	2.000 EA
HA4054	SHORT T-DRAIN FITTING, .125" N.P.T.	1.000 EA
HA4054	SHORT T-DRAIN FITTING, .125" N.P.T.	1.000 EA
609830005ACW	STUD,FRAME,FL4058,BOTT	2.000 EA

Parts List (continued)		
Part Number	Description	Quantity
609830005ACZ	STUD,FRAME,FL4058	2.000 EA
708532016A	AIR BAFFLE	1.000 EA
807532003AA	BRKT,RL400	1.000 EA
423317001B	GRD BRUSH	1.000 EA
036310010FB	RHMS TERM/BLK MTG	1.000 EA
807532004AA	BRKT,RL400	1.000 EA
000613006NT	NAME PLATE IEC	1.000 EA
032018004DK	HHCS,DRIP COVER	4.000 EA
032018006CK	HHCS 3/8-16X3/4L PLATED	4.000 EA
034017014AB	LCKW 3/8 STD. PLATED	4.000 EA
036000012JB	M8-1.25 X 12MM HXHDC	3.000 EA
036000016HD	HXHCS	8.000 EA
036000020JB	HHCS M8-1.25X20L PLTD-250	6.000 EA
036000020JD	HHCS M8X20MM LONG 304S.S	5.000 EA
036000025JB	HHCS M8X25MM LONG PLATED	4.000 EA
036000055KB	M10-1.5 X 55MM HHCS	4.000 EA
036620010AB	M10 EXT. TOOTH LK WASHER	2.000 EA
036600008AD	FLTWSHR,T BLK SPT	8.000 EA
417733036B	GASKT,C/BOX BACKPLATE,REF 706310063E	1.000 EA
418057256C	HHCS M10 25MM 440 IEC	2.000 EA
410978010F	FLANGE, INLET BLOWER HSG	1.000 EA
410978015A	GRILL, INLET FLANGE	1.000 EA
417733004G	GASKT	2.000 EA
417733013E	GASKT L440	1.000 EA

Product Information Packet: IDDRPM407004R1 - 700HP,1780/2400RPM,460V,3PH,DPGFV,RL4058

417733014F	GASKT L440	1.000 EA
418014014T	ADAPT,C/BOX	1.000 EA
418018074A	GROUND LABEL G100 METRIC 160 D.C.	1.000 EA
422919133	HHCVR KIT,C400,DE,LOUVERED	1.000 EA
422919133	HHCVR KIT,C400,DE,LOUVERED	1.000 EA
422919137	HHCVR KIT,C400,DE,SOLID,X/T	1.000 EA
422919137	HHCVR KIT,C400,DE,SOLID,X/T	1.000 EA
422919418	HHCVR KIT,RL400,ODE/DE,C/BOX MTG	1.000 EA
610490001BW	3//2.5HP,3450//2850RPM,3PH,60//50HZ,145T	1.000 EA
415000103F	TLUG	2.000 EA
611917002P	GASKT C400	1.000 EA
611965001E	BLOWER WHEEL	1.000 EA
613439049A	ADAPT,C/BOX,RL400	1.000 EA
706305301A	GUARD, SHAFT	1.000 EA
706310058E	KOBX CVR - 18.90 [480] X 19.49 [495]	1.000 EA
706310389A	706310389AA ENTRY PLATE	1.000 EA
706310063E	CBOX L440 1260A MAX	1.000 EA
706313062B	BLHSG FE MTG C400	1.000 EA
000640000P	TAG WINDING THERMOST	1.000 EA
004824007K	SPECIAL PAINT	0.300 EA
034180046KA	KEY 7/8X7/8X5-3/4L	1.000 EA
418018116	WARNING PLATE	1.000 EA

REL S.O.	-	VOLTS	460	ENCLOSURE	DPFV	WYE	CONN EQ	CKT OHMS	PER PHASE
FRAME	RL4058	AMPS	777	MAX SAFE RPM	3750	(AT BASE RATING, 25 °C)			
HP	700	DUTY	CONT	IM (AMPS)	216	R1	.00351	X1	.0342
BASE SPEED	1780	S.F.	1.0	P.F. @NL/FL	.038/.897	R2	.00266	X2	.0386
PHASE/HERTZ	3/60	AMB °C/INSUL	40/H	WK <sup>2</sup> (lb-ft <sup>2</sup> )	98			XM	1.26


**RATED FULL LOAD DATA**

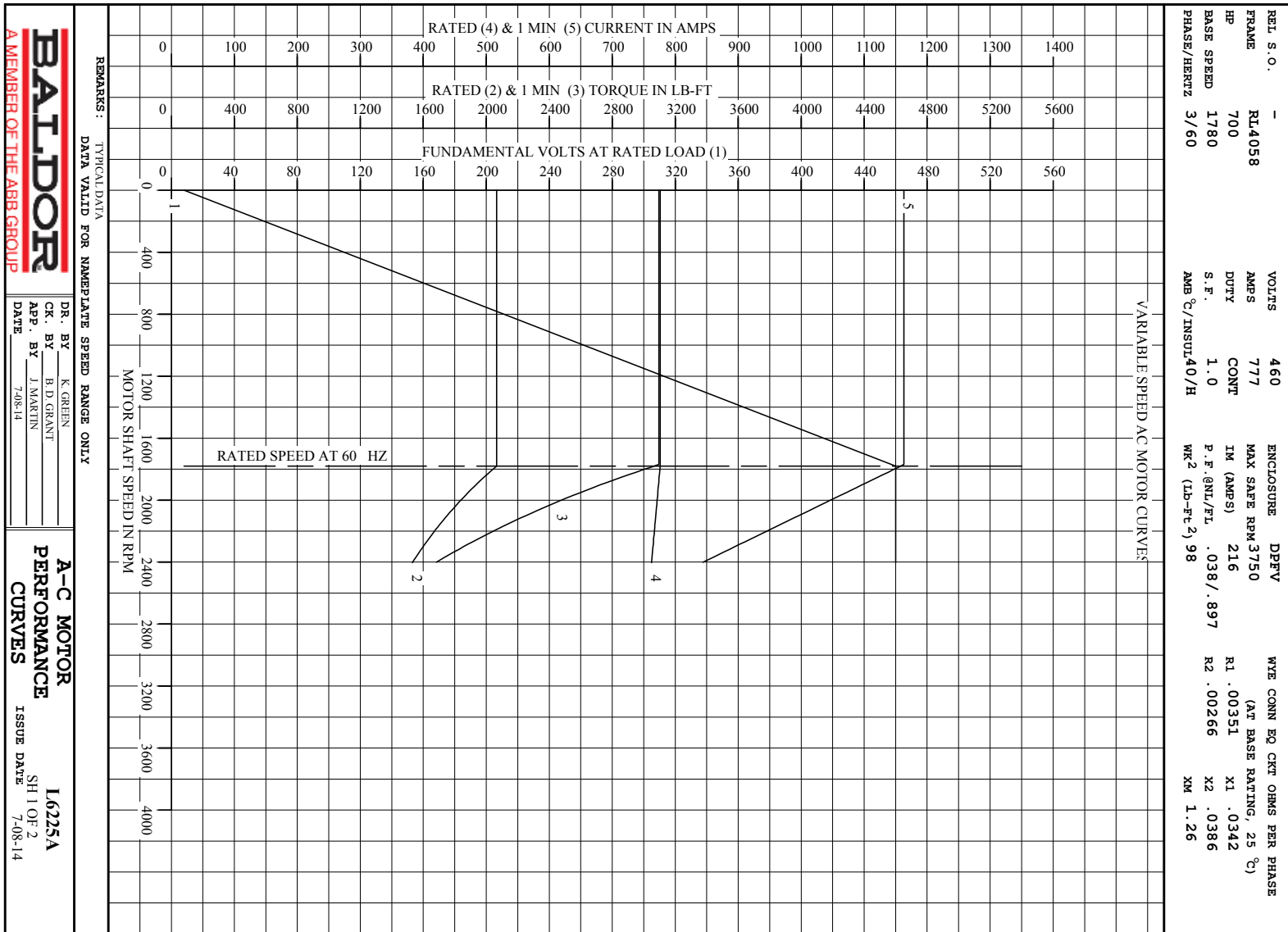
	RPM	HP	TORQUE LB-FT	FUND VOLTS	FREQ-HZ	AMPS
BASE SPEED	1781	700	2064	460	60	776
MAX SPEED	2404	701	1530	460	81	762
MIN SPEED	0	0	2064	8.14	.632	776

**LOAD PERFORMANCE AT BASE SPEED**

	RPM	HP	TORQUE LB-FT	FUND VOLTS	FREQ-HZ	AMPS
NO LOAD	1800	0	0	460	60	211
1/4	1796	175	513	460	60	286
1/2	1791	350	1028	460	60	429
3/4	1786	525	1544	460	60	595
FULL LOAD	1781	700	2064	460	60	776
O/L	1770	1044	3097	460	60	1163

REMARKS: TYPICAL DATA

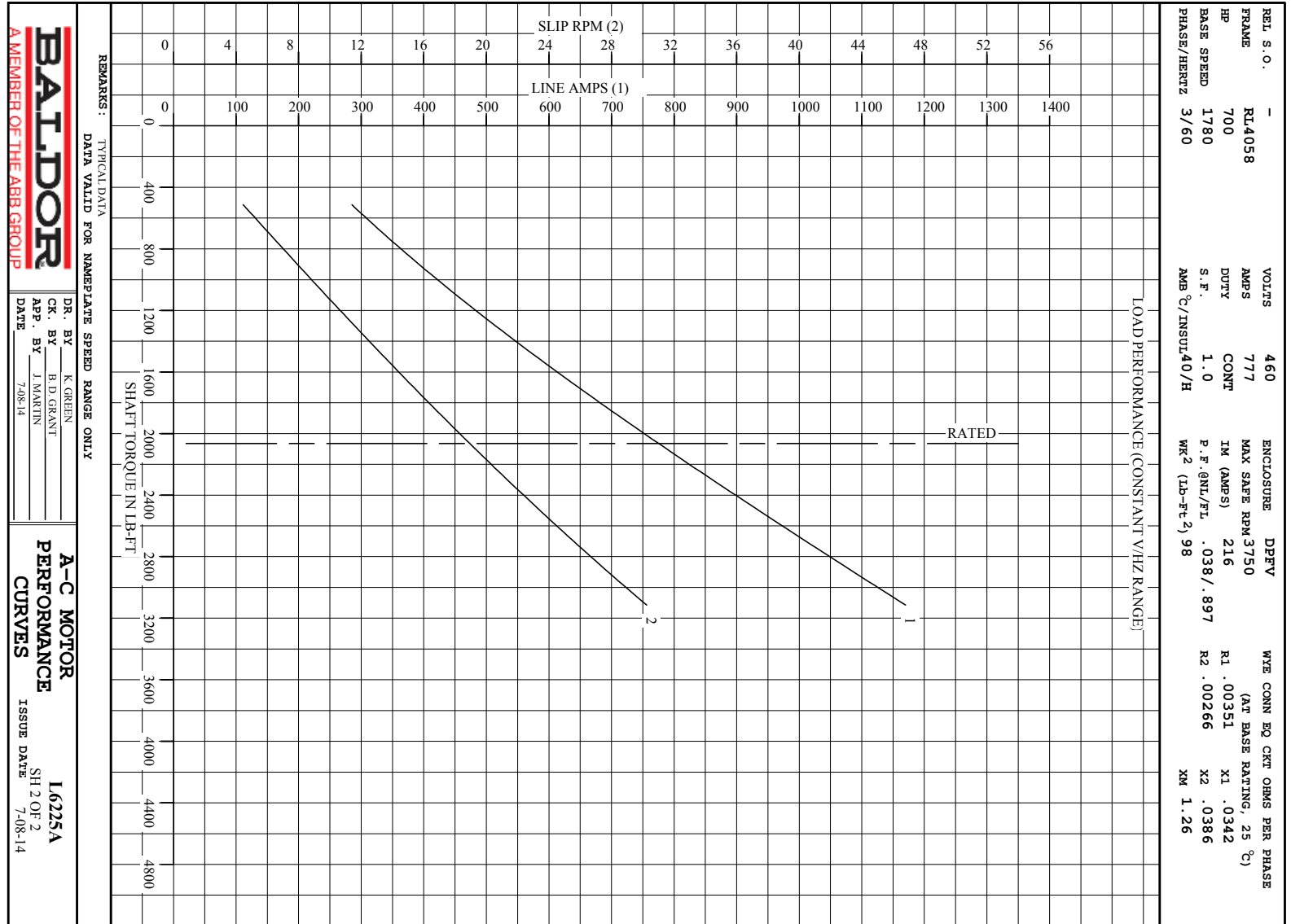
 A MEMBER OF THE ABB GROUP	DR. BY	K. GREEN	<b>A-C MOTOR</b> <b>PERFORMANCE</b> <b>DATA</b> ISSUE DATE 7-08-14
	CR. BY	B. D. GRANT	
	APP. BY	J. MARTIN	
	DATE	7-08-14	



**BALDOR**  
A MEMBER OF THE ABB GROUP

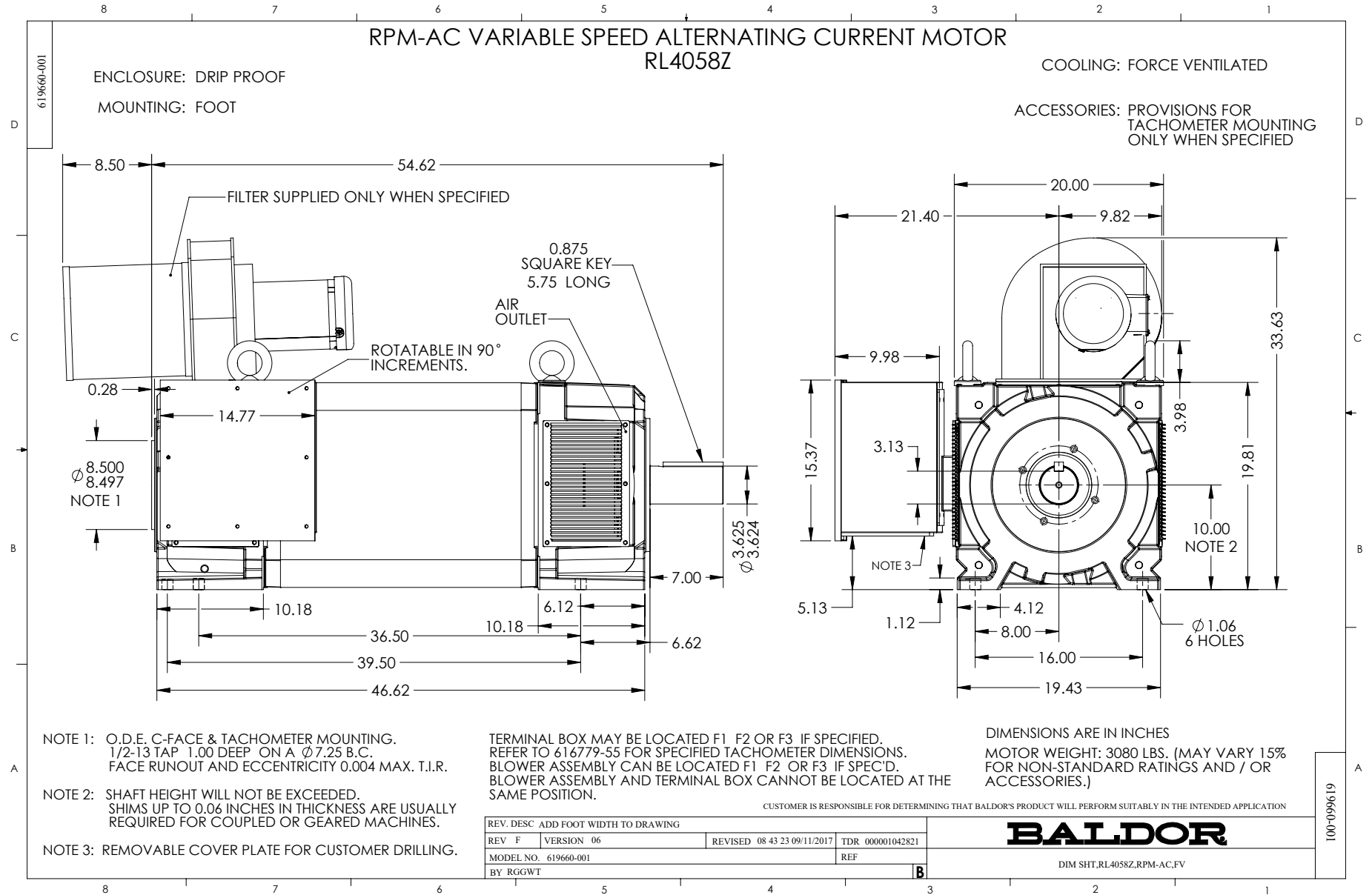
DR. BY K. GREEN  
CR. BY B.D. GRANT  
APP. BY J. MARTIN  
DATE 7-08-14

**A-C MOTOR**  
**PERFORMANCE**  
**CURVES**  
ISSUE DATE 7-08-14  
I6225A  
SH 1 OF 2

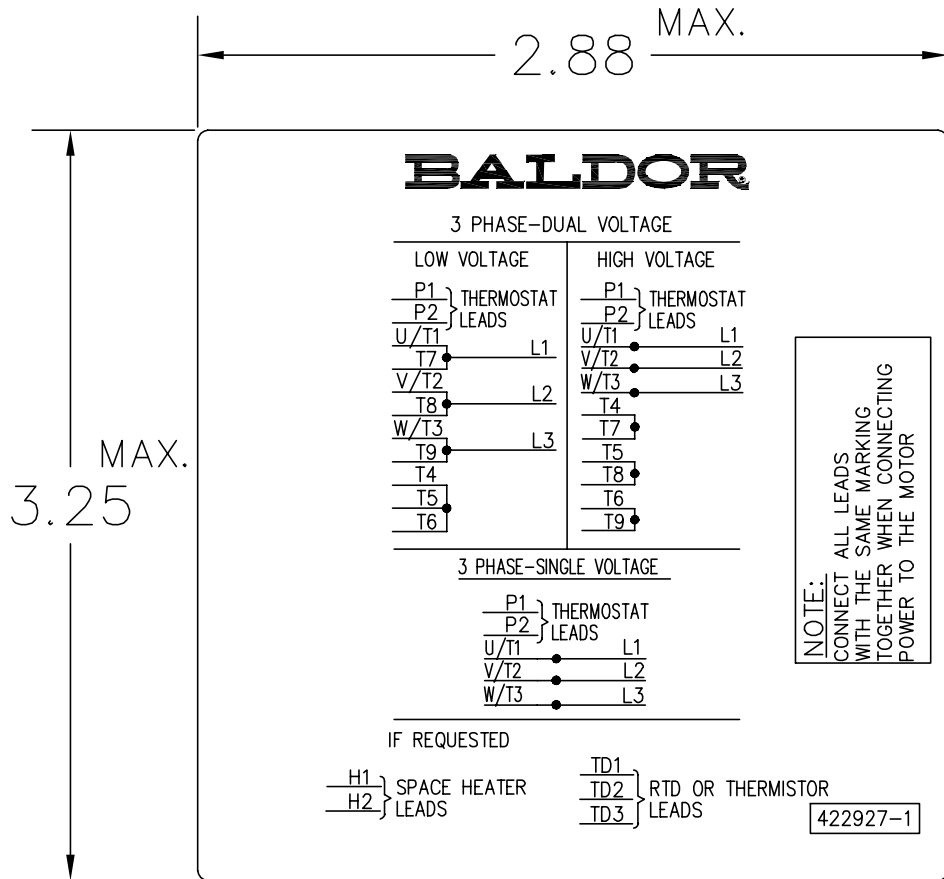


DR. BY K. GREEN  
 CR. BY B.D. GRANT  
 APP. BY J. MARTIN  
 DATE 7-08-14

**A-C MOTOR**  
**PERFORMANCE**  
**CURVES**  
 I6225A  
 SH 2 OF 2  
 ISSUE DATE 7-08-14



422927-001



NOTE:  
DATA TO BE SIZED  
SO THAT IT FITS INTO  
MATERIAL DECAL  
DIMENSIONS. MAKE  
LETTERS & NUMBERS  
AS LARGE AS POSSIBLE.

MATERIAL: CERAMATIC DGF-P4  
PERMA GRIP ADHESIVE

ALL LETTERS, NUMBERS  
AND LINES TO BE BLACK  
ON WHITE BACKGROUND.

422927-001

REV. DESC: CHANGE BACKGROUND COLOR FROM GOLD TO WHITE		
REV. LTR: B	VERSION: 02	TDR: 000000788708
FILE: \RGG\00000\203	REVISED: 08:09:29 03/04/2013	
MTL: -	BY: RGGWT	

**BALDOR**

EXTERNAL CONNECTION LABEL

SH 1 of 1

Marketing maintained PDF of MN406:

<http://www.baldor.com/support/Literature/Load.ashx/MN406?ManNumber=MN406>